

Hand Pumps



Allison Hydraulics



Index

Hand Pumps

Double acting hand pumps (without reservoirs)

Page 3



- Displacements up to 70 cc
- Max. working pressure up to 350 bar
- Weights up to 6 Kg

Double acting hand pumps (with reservoirs)

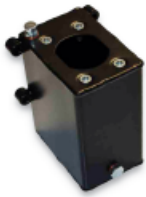
Page 6



- Displacements up to 45 cc
- Max. working pressure up to 380 bar
- Weights up to 4.4 Kg

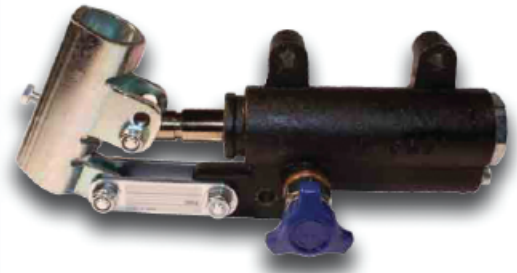
Tanks/Reservoirs

Page 9

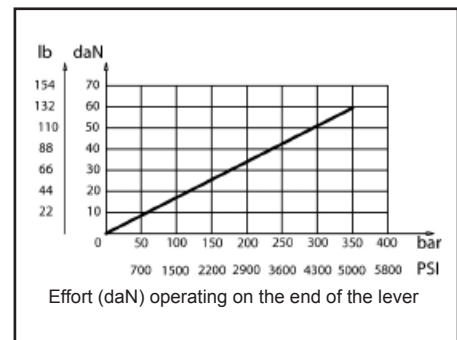
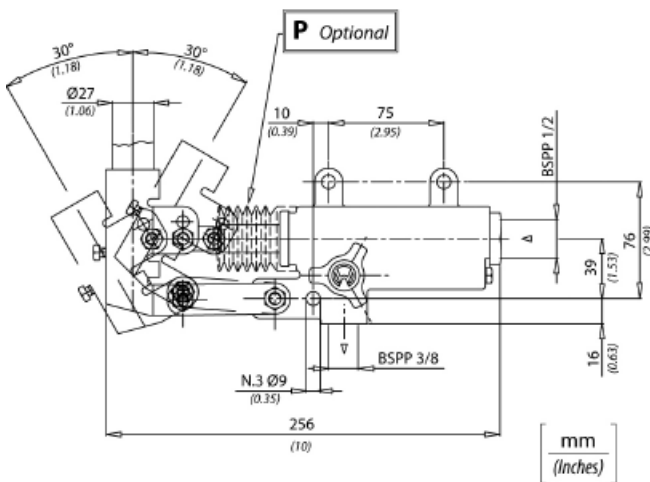
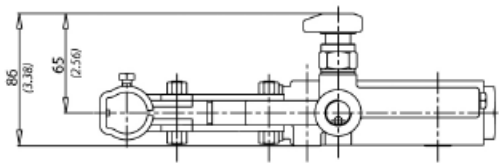
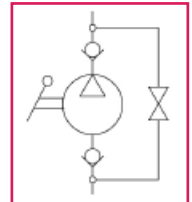


Features:

- Double acting hand pumps to be fitted inside a suitable reservoir.
- Painted cast-iron body.
- Chromed steel rod.
- Unloading valve.
- Double acting lever L=600mm.
- Oil flow in both directions of lever action.



Code	Displacement	Max working pressure	Weight Kg
PM20	20 cm ³	350 bar	3.6



Model code

PM	020	S	00	L
Model series				Blank = no lever L = lever Standard = 600mm
Displacement: 20				
Standard: With rubber protection				Version: 00 = with unloading valve 10 = without unloading valve



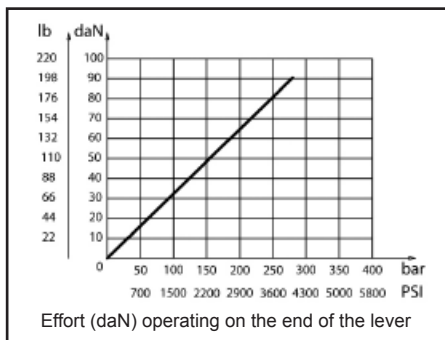
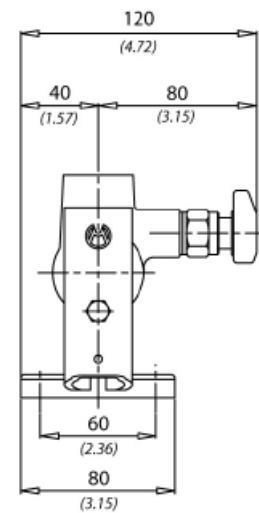
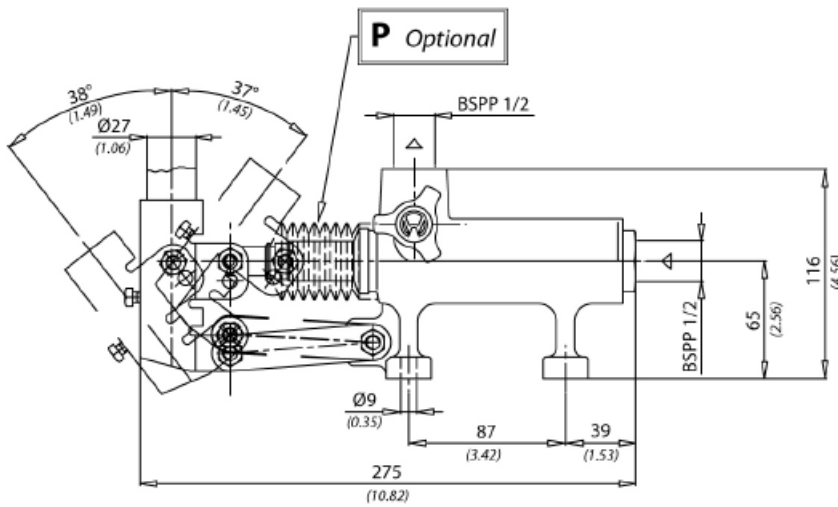
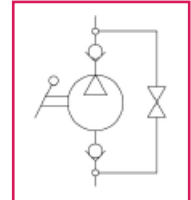
Allison Hydraulics

Features:

- Double acting hand pumps to be fitted inside a suitable reservoir.
- Painted cast-iron body.
- Chromed steel rod.
- Unloading valve.
- Double acting lever L=600mm.
- Oil flow in both directions of lever action.



Code	Displacement	Max working pressure	Weight Kg
PM50	50 cm ³	280 bar	4.3



Model code

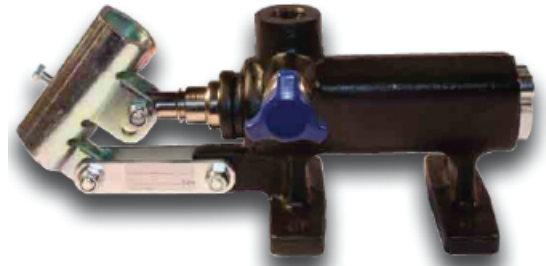
PM	050	S	00	L
Model series				Blank = no lever L = lever Standard = 600mm
Displacement: 50				
Standard: With rubber protection				Version: 00 = with unloading valve 10 = without unloading valve



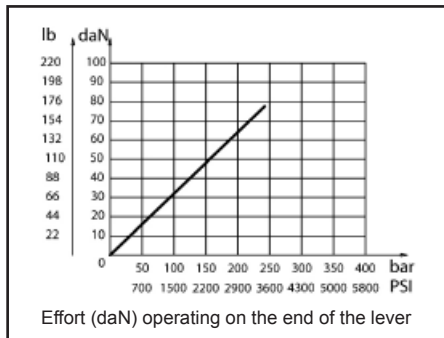
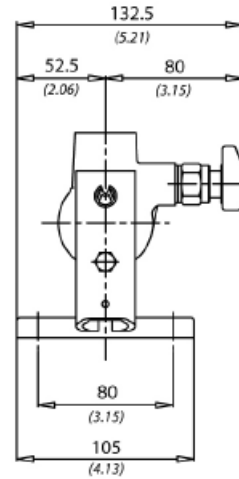
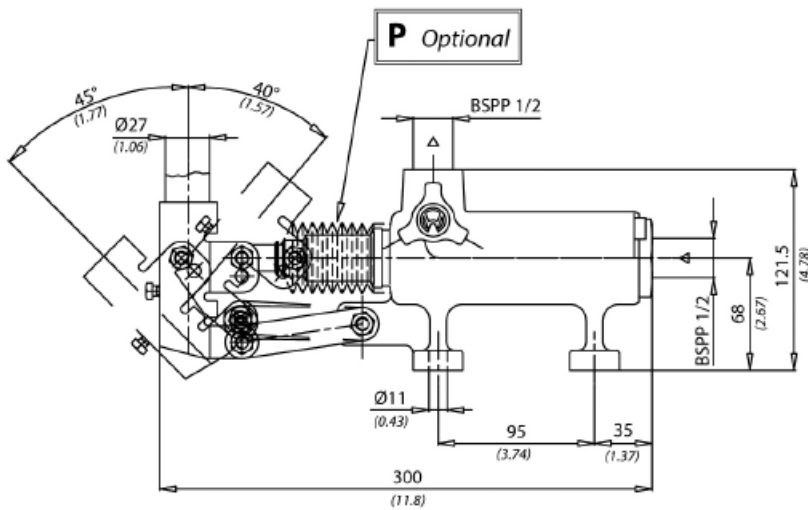
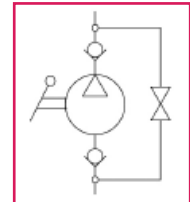
Allison Hydraulics

Features:

- Double acting hand pumps to be fitted inside a suitable reservoir.
- Painted cast-iron body.
- Chromed steel rod.
- Unloading valve.
- Double acting lever L=600mm.
- Oil flow in both directions of lever action.



Code	Displacement	Max working pressure	Weight Kg
PM70	70 cm ³	230 bar	6



Model code

PM	070	S	00	L
Model series				Blank = no lever L = lever Standard = 600mm
Displacement: 70				
Standard: With rubber protection				Version: 00 = with unloading valve 10 = without unloading valve

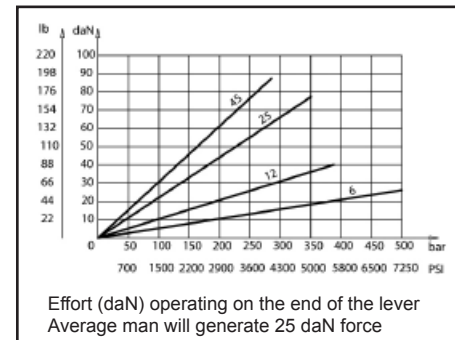
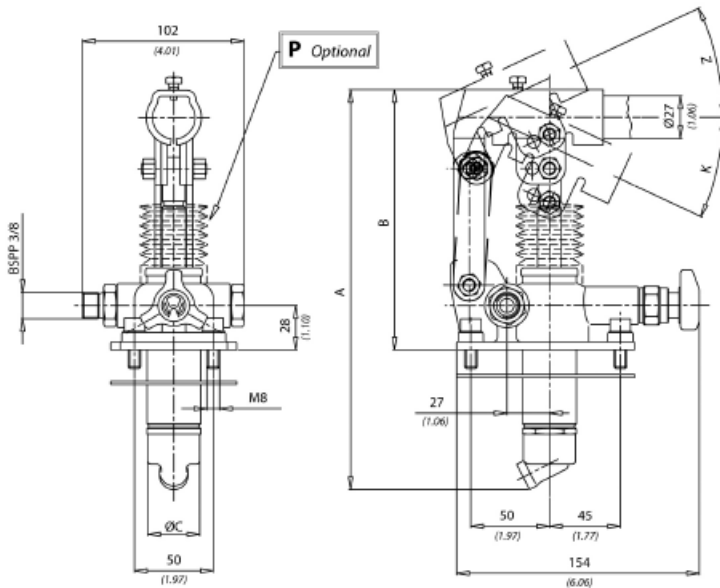
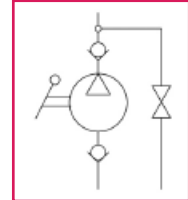
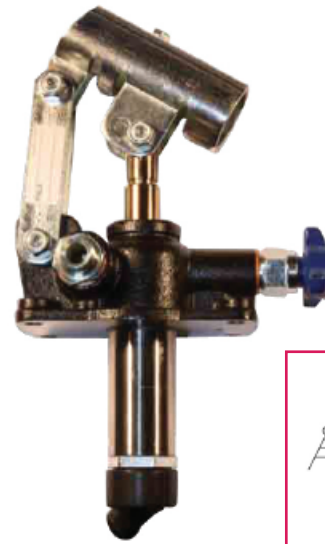


Allison Hydraulics

Features:

- Double acting hand pumps to be fitted inside a suitable reservoir.
- Painted cast-iron body.
- Chromed steel rod.
- Unloading valve.
- Double acting lever L=600mm.
- Oil flow in both directions of lever action.

Displacement	Max working pressure	Weight Kg
12 cm ³	380 bar	3.9
25 cm ³	350 bar	
45 cm ³	280 bar	



Model code

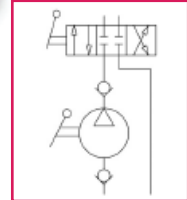
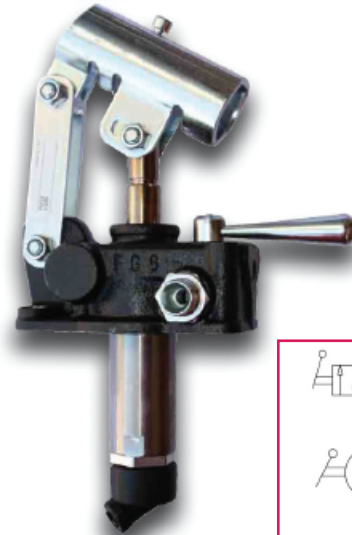
PM	12	S	00	VM	L	01
Model series						Steel tank (see page 9)
Displacement: 12, 25, 45						Blank = no lever L = lever Standard = 600mm
Standard: With rubber protection						
Version: 00 = with unloading valve 10 = without unloading valve						Blank = no valve VM = relief valve



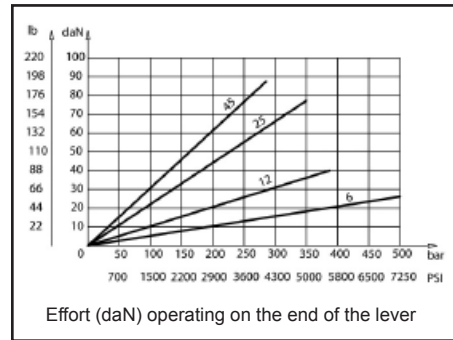
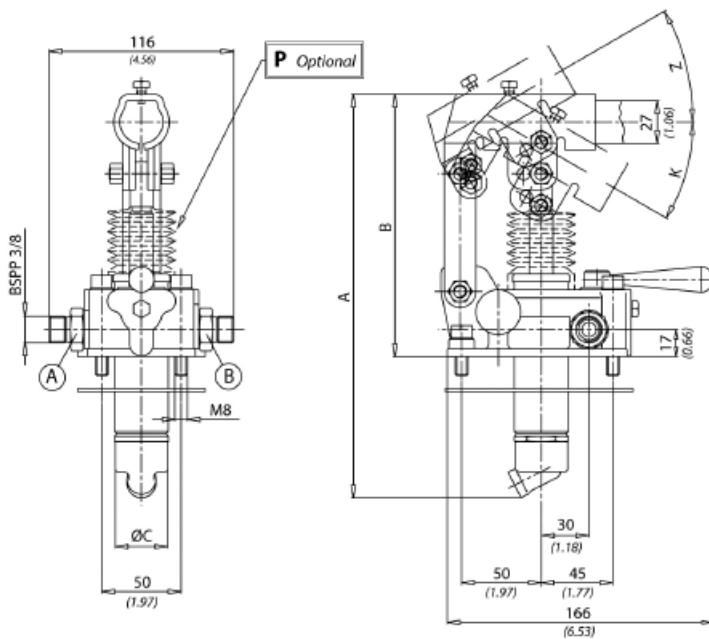
Allison Hydraulics

Features:

- Double acting hand pumps to be fitted inside a suitable reservoir.
- Painted cast-iron body.
- Chromed steel rod.
- 4 ways, 3 positions closed centre flow diverter.
- Double acting lever L=600mm.
- Oil flow in both directions of lever action.



Displacement	Max working pressure	Weight Kg
12 cm ³	380 bar	4.4
25 cm ³	350 bar	
45 cm ³	280 bar	



Model code

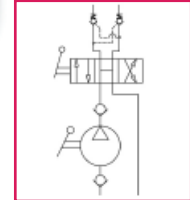
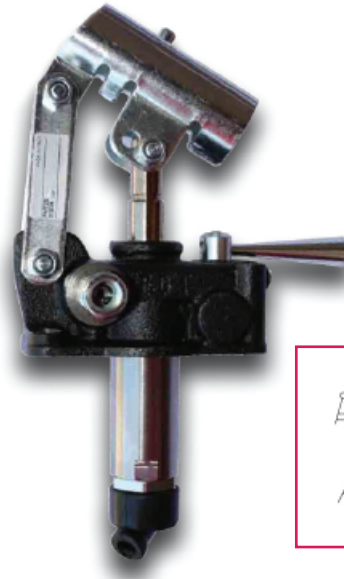
PMI	12	S	00	VM	L	01
Model series						Steel tank (see page 9)
Displacement: 12, 25, 45						Blank = no lever L = lever Standard = 600mm
Standard: With rubber protection						
Version: 00 = with unloading valve 10 = without unloading valve						Blank = no valve VM = relief valve



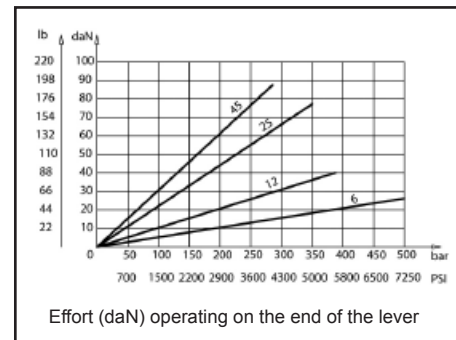
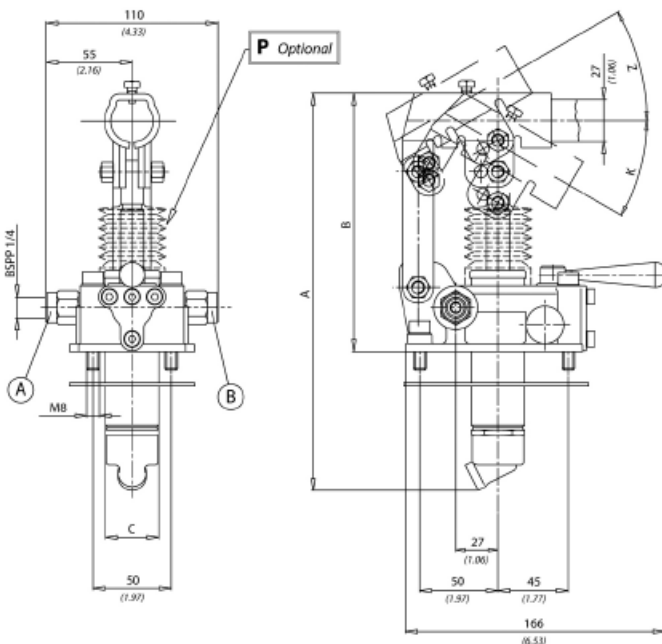
Allison Hydraulics

Features:

- Double acting hand pumps to be fitted inside a suitable reservoir.
- Painted cast-iron body.
- Chromed steel rod.
- 4 ways, 3 positions flow diverter with pilot check valves.
- Double acting lever L=600mm.
- Oil flow in both directions of lever action.



Displacement	Max working pressure	Weight Kg
12 cm ³	380 bar	4.4
25 cm ³	350 bar	
45 cm ³	280 bar	



Model code

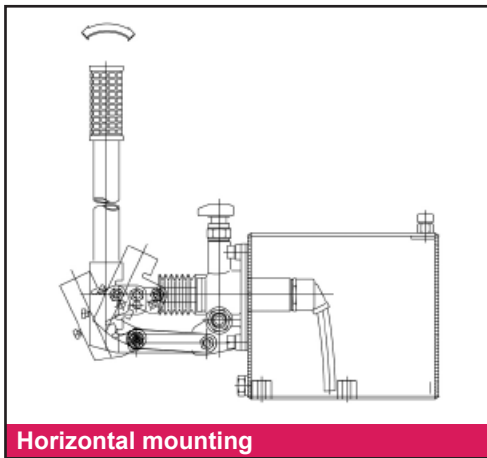
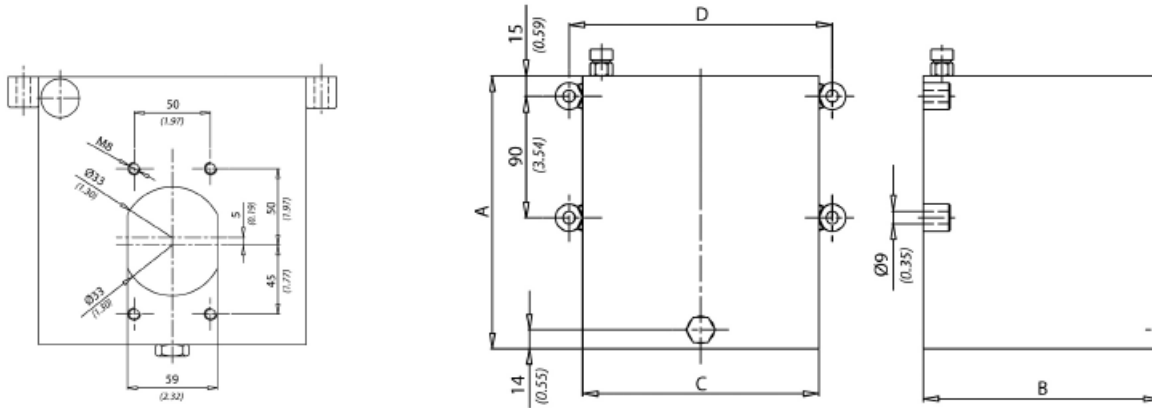
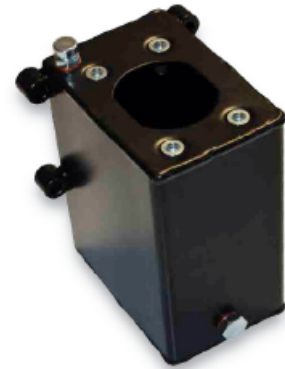
PMB	12	S	00	VM	L	01
Model series						Steel tank (see page 9)
Displacement: 12, 25, 45						Blank = no lever L = lever Standard = 600mm
Standard: With rubber protection						
Version: 00 = with unloading valve 10 = without unloading valve						Blank = no valve VM = relief valve



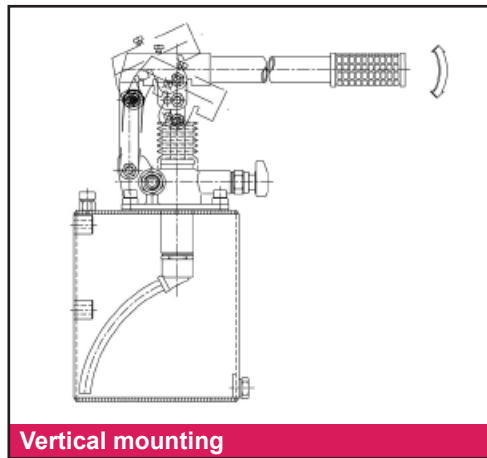
Allison Hydraulics

Features & dimensions:

Code	Capacity	A	B	C	D	Weight Kg
TNK1	1	120	150	100	120	2.0
TNK2	2	180	150	100	120	2.2
TNK3	3	247	150	100	120	2.5
TNK5	5	200	175	175	195	4.5
TNK7	7	269	175	175	195	5.4
TNK10	10	376	175	175	195	6.8



Horizontal mounting



Vertical mounting

Model code

TNK	2160	01
-----	------	----

Model series

Serial number

Capacity:
01, 02, 03, 05, 07, 10



Allison Hydraulics